

Litter can kill

Pleasure is taken by most people in feeding the birds around the local parks and open spaces. Rubbish left lying around can cause injuries and slow death. Bin it or take it home.

Plastic from a pack of four cans



We want visitors to enjoy their leisure time in our parks without the distress of seeing the suffering caused by other people's carelessness.



Fishhook

Water birds, especially immature large birds such as swans, can get themselves into difficulties by landing in people's gardens. They can also mistake roads for rivers, and it is not until they have alighted on the M4 that they realise their blunder.



Other leaflets in this wildlife care series include: Fledglings, Hedgehogs in your back yard, The pipistrelle bat.

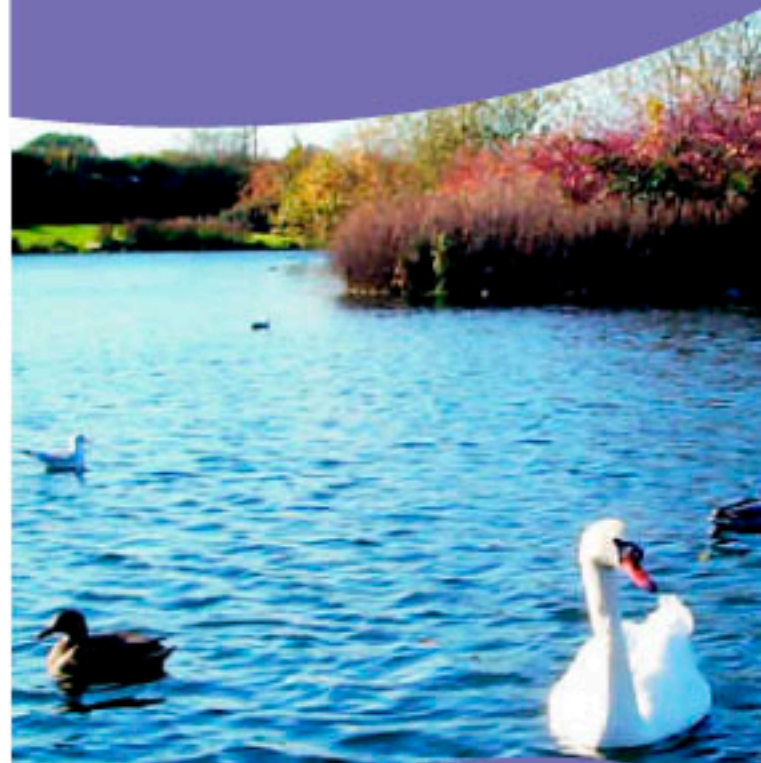
Useful telephone numbers

RSPCA	0300 1234 999
British Hedgehog Society	01584 890801
RSPCA North Wilts Branch Mon - Fri	10am - 12 noon 01793 640136

Photographs and Text

© Sue Hulbert 2004

Prevention is better than cure



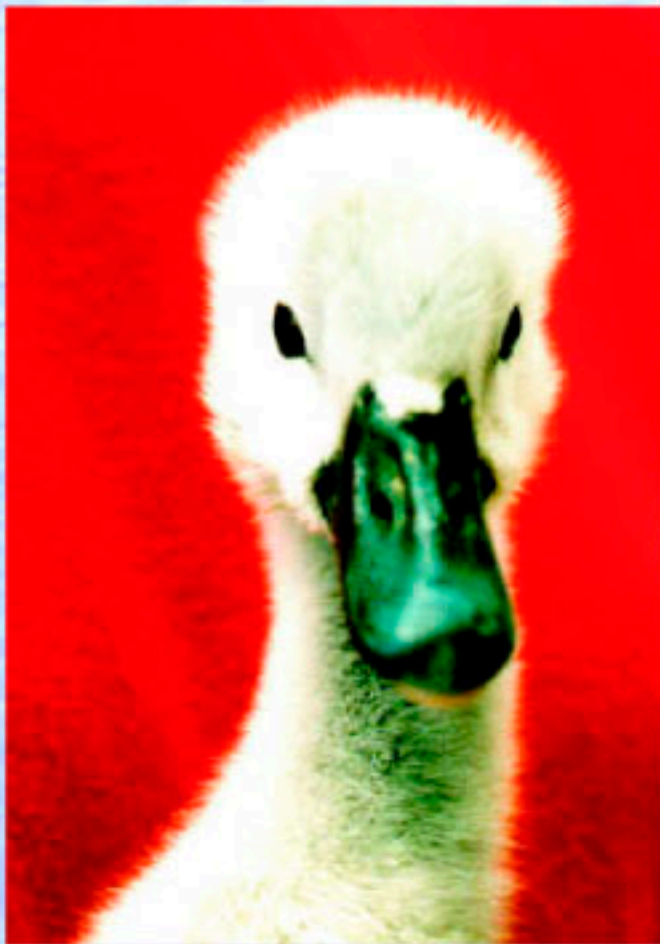
Information



THE SOUTH WEST
SWAN SANCTUARY

In conjunction with the
North Wilts RSPCA





Anglers

Safeguard your sport by safeguarding your wildlife. When setting up to fish, pick a swim away from nesting sites and favourite areas where birds enjoy getting out of the water to preen.

If waterfowl encroach on your swim, ignore them: do not feed them or they will come back. They will generally take the hint and move away. However, sometimes they will stay-especially young, immature birds. Splash your landing-net handle gently in the water to discourage them.

ALWAYS SINK YOUR FISHING LINE and never leave rods unattended. This is the Law.

Tangled line and discarded line can maim and kill not just water birds, but other birds, bats and animals. Take your line home, cut it into small pieces, then dispose of it safely.

Barbed hooks are banned on all good fishing waters, so please make sure that the rules of the water are adhered to. They are there for a reason.

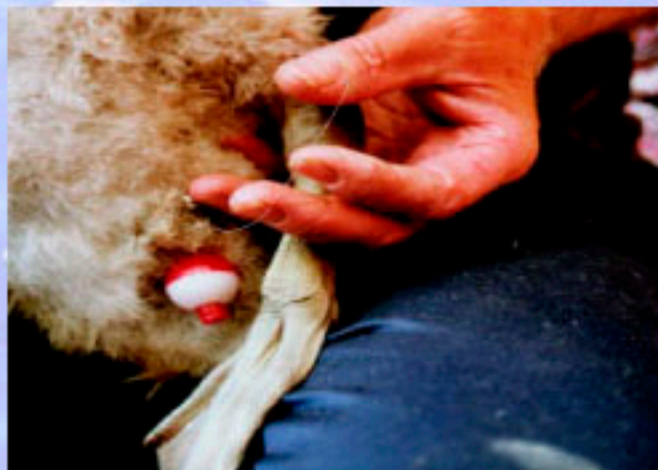
Forceps holding fishing line that has been swallowed by a swan.



Dog owners

If you are walking your dog(s) around a stretch of water, please keep them under control: if your dog is disobedient, then put it on a lead. More than one dog when attacking will revert to its hunting instincts as their ancestors would have done. (Hunting in packs).

REMEMBER, INJURING WILDLIFE IS AN OFFENCE BY LAW AND YOU CAN BE PROSECUTED FOR IT.



Accidents do happen from time to time and birds become ensnared. **DO NOT PULL THE LINE**, cut or break it off. Do not attempt to catch the bird yourself. All you will achieve is frightening the bird, or causing its injury to become worse, this could result in its death.

Call one of the numbers listed. Leave as much information as you can, for example: the exact location, the type of bird (if you know), and any other information. This will enable us to reduce suffering, and sometimes to prevent death.